



Family campsite with 71 pitches located in the heart of vineyards, between lake and sea, you will enjoy a relaxing holiday with activities and entertainment in July and August, close to many sites to visit, 1.5 km from the village, 30 km from the beaches Ste Maxime, Fréjus, Saint Raphael, 45 km from Lac Ste Croix, the Gorges du Verdon and St Tropez. 1 hour from Nice and Marseille.

Welcome in Provence

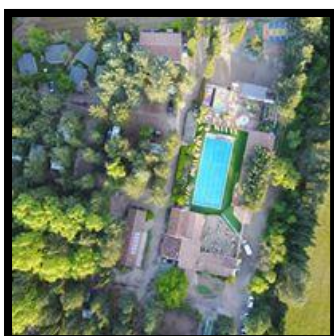
For our presence from 20 years
Open all year !

Our services all year round: Fiber optic Wifi throughout the campsite, private wellness area with sauna, hammam, jacuzzi, outdoor children's games, slides, swing, pétanque court, trampoline, table tennis, badminton court, rental of Mountain biking, billiards, table football, laundry, sanitary facilities heated in winter with cabin for the disabled, loan of iron, cot, high chair, etc.

From April to the end of September: Bar, restaurant with terrace with 8 m² LED screen and lounge area by the pool, air-conditioned dining room, board, take-away meal, restaurant vouchers and holiday vouchers accepted. Bread deposit on reservation.

From April to October: 25 m x 10 m swimming pool heated to 27°C, 2 jacuzzis at 35°C, wall of water, with 300 m² beach with deckchairs, aqua-fun platform and inflatable water game for children . Open depending on weather conditions.

July and August: Club atmosphere with daytime and evening entertainment, children's mini-club from 4 years old with qualified entertainer, activities for the whole family, pétanque competition, karaoke, cabaret, dance evening, nighttime swimming pool, screen at 8m² LED, group outing... Certified lifeguard: Supervision, swimming and aquagym lessons, shorts prohibited...



PRICES : TENT/ CARAVAN/ CAMPING CAR :



10 %

Without tourist tax 0.86 €/night/pers+18yr

discount for 14 nights on places except from july 08th to august 20th 2023

NIGHTLY PRICES TENT CAMPING CAR CARAVAN	FROM JANUARY 01 TO MARCH 31	FROM MARCH 31 TO JULY 01	FROM JULY 01 TO AUGUST 20
	FROM SEPTEMBER 24 TO DECEMBER 31	FROM AUGUST 20 TO SEPTEMBER 24	ARRIVAL 14H DEPARTURE 12H
Naked places basis 1 or 2 pers max 1 car with sanitary heater in winter	13.90 €	19.90 €	28.90 €
ADULT additional	5.00 €	8.00 €	10.00 €
Children from 8 years old to 18 years old	3.00 €	5.00 €	8.00 €
Children to 7 years old	1,80 €	2.80 €	6.00 €
Dog 1st and 2sd category prohibited	2.50 €	2.50 €	3.50 €

WIFI optical fiber **FREE**

Tent additional same family : **FREE**

TENT additional for groups : **6€/night**

Fridge TOP Rental : **5€/night**

Electricity : **6€/night**

Visitor day : **5€/pers**

Filling and emptying the motorhome without night : **5.00 €**



LOCATION RENTAL AGREEMENT 2023 to be completed and returned to us for any reservation "camping de la vallée de Taradeau" 371 quartier Plan Guillet 83460 Taradeau tél : 04.94.73.09.14

Mail : contact@campingdetaradeau.fr Site internet : www.campingdetaradeau.fr

Name : _____ Firstname : _____

Address : _____

Post code : _____ city : _____

Mail : _____

Phone n° : _____

	NAME	FIRSTNAME	DATE OF BIRTH		NAME	FIRSTNAME	DATE OF BIRTH
1				4			
2				5			
3				6			

TENTE : CARAVANE : CAMPING-CAR :

Arrival date from 14pm

Departure date before 12am

Nb of night:

Prices in page 2 without tourist Tax 0.86/pers/night 18 years old and +

	Price per night	Nb of night	Nb of person	Total amount
Place for 2 pers maxi				
Adult add				
Child from 8 to 18 years				
Child until 8 years				
Animals (max 2)				
Electricity 10 ampères	6€			
Fridge rental	5€			
Total amount				

Cancellation insurance of the federation of campsites (FFCC) to 8.5% per holiday : yes or no

Amount of insurance 8.5%:€ administration fees in July and August €20

That is a total price of your stay € 30% deposit on booking€

10% Reduction for 14 nights except from 08/07 to 20/08/23 €

The balance of the stay to be paid (1 month before your arrival): €

Reminder: Any stay that is interrupted, shortened or canceled does not give rise to any refund and must be paid in full except for the cancellation insurance conditions.

We accept the general conditions of sale page 13 to 14 and be in perfect agreement.

Lu et approuvé(e) :

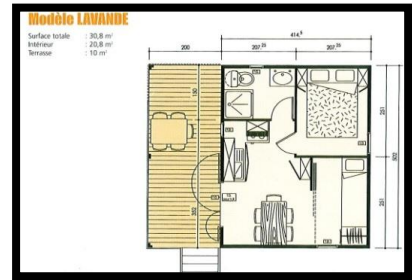
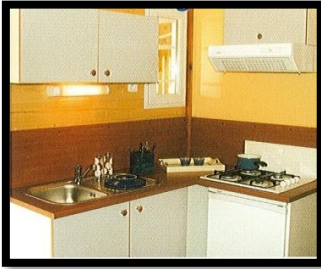
Date :

Sign :

DESCRIPTIONS OF RENTALS

LE CHALET LAVANDE

Chalet 2004 comfort summer winter **Lavender** 30 m² for 2/4 people, photos below, with covered terrace, garden furniture, 1 closed bedroom with 1 bed 140, 2 single beds including 1 bunk in 80 closed with sliding doors, room water with shower, basin with cupboard and toilet, kitchen equipped with crockery, microwave, fridge-freezer, Senseo. Flat screen TV, air conditioning, wood shutters, drying rack. Blanket on reservation, blankets and pillows provided, linen not provided. Slot 50,51



LE CHALET EDELWEISS

Chalet 2004 comfort summer winter **Edelweiss** 52 m² for 4/7 people, reversible air conditioning, photos below, with covered terrace, garden furniture, 2 bedrooms with bed 140, including 1 with 1 bunk bed in 80 above the large bed, bathroom with shower and closet under the sink, separate toilet, kitchen with dishes, microwave, fridge-freezer, Senseo, dishwasher, sofa bed 140, wardrobes, flat screen TV. Wooden shutters, drying rack. Blanket on reservation, blankets and pillows provided, linen not provided. Slot 49



LE CHALET MOREA



Chalet 2010 **Moréa** Gitotel 33 m² 4/5 persons, with covered terrace, reversible air-conditioning, photos below, 2 bedrooms: 1 bedroom with 1 bed 140 and 1 bedroom with 3 beds 80 including 1 bunk, bathroom with shower and washbasin, separate toilet, kitchen with microwave, dishes, fridge-freezer, cupboards, terrace with garden furniture, drying rack. Blanket on reservation, blankets and pillows provided, linen not provided. Slot 68,69,70,71,72



LE CHALET VANCOUVER

Chalet **Vancouver** 41m² modern contemporary 2018 comfort for 4/5 people with covered terrace with table and chairs, drying rack. Photos below: kitchen equipped with microwave, fridge freezer, crockery kit, Senseo, cupboards, corner bench, flat screen TV, reversible air conditioning in heating, 2 bedrooms: 1 bedroom with 1 bed of 140, 1 bedroom with 1 bed of 140 and a bunk bed of 80, rolling shutter, blankets, pillows and mattress pads provided, household linen not provided. Bathroom with basin and cupboard, shower, towel dryer, toilet. Slot 4



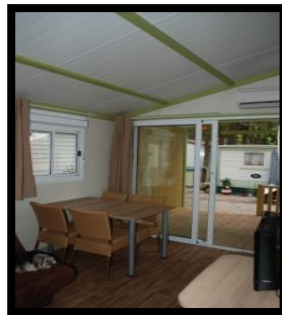
LE CHALET ATLANTIS 2006

Chalet 2006 **Atlantis Gitotel** 43 m² 4/7 people, with covered terrace, air conditioning. Photos below 2 bedrooms: 1 bedroom with 1 bed 140 and 1 bedroom with 3 beds 80 including 1 bunk, bathroom with shower and sink, separate toilet, kitchen with microwave, dishes, fridge-freezer, closets, sofa bed 140, flat screen TV, terrace with garden furniture, drying rack. Blanket on reservation, blankets and pillows provided, linen not provided. Slot 1



LE CHALET ATLANTIS 2012

Chalet comfort 2012 summer winter **Atlantis Gitotel** 4/7 people 43 m² with terrace photos below, air conditioning. 2 bedrooms: 1 bedroom with 1 bed 140 and 1 bedroom with 3 beds of 80 including 1 bunk, bathroom with shower and sink, separate toilet, kitchen opening onto the terrace, microwave, dishes, fridge-freezer, Senseo, wardrobes, sofa bed, flat screen TV, terrace with garden furniture, drying rack, shutters. Blanket on reservation, blankets and pillows provided, linen not provided. Slot 3,19



LE CHALET SAMOA

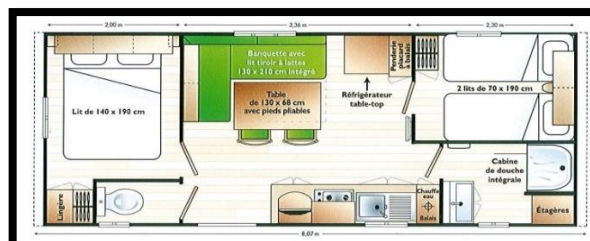
Chalet comfort 2012 summer winter **Samoa** Gitotel 6/9 persons 54 m² with terrace, reversible air-conditioning, photos below, 3 bedrooms: 1 bedroom with 1 bed 140 and 1 bedroom with 3 beds 80 including 1 bunk and 1 bedroom with 2 small bed of 80, bathroom with shower and sink, separate toilet, kitchen with microwave, dishes, fridge-freezer, closets, sofa bed 140, terrace with garden furniture, drying rack, shutters. Flat screen TV. Blanket on reservation, blankets and pillows provided, linen not provided. Slot 58



MOBIL HOME CONFORT IRM

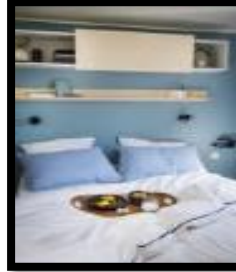


MOBIL HOME comfort 2008 **IRM Titania** 4 persons 24 m² photos above and below 2 bedrooms: 1 bedroom 1 bed 140 and 1 bedroom with 2 beds 80 with mosquito nets and blackout curtains, mattress, bathroom with shower 80x80 cm and basin, separate toilet, kitchen, closet with crockery, microwave, fridge, freezer, Senseo, living room, flat screen TV, air conditioning, paved terrace with pergola and garden furniture, drying rack in machine. Blankets and pillows on request. Bed linen not provided. Slot 16



MOBIL HOME CONFORT IRM

MOBILE HOME standard **IRM Titania** 2019 24 m² 2/4 people, photos below: fitted kitchen, cupboard with crockery, microwave, fridge-freezer, electric coffee maker, lounge area, flat screen TV, 2 bedrooms: 1 bedroom 1 bed in 140 and 1 bedroom with bunk beds of 70 with mosquito nets and blackout curtains, mattress covers, blankets and pillows provided. Bed linen not provided. Shower room with shower 80x80 cm and washbasin, separate toilet, reversible air conditioning in heating. Paved terrace with pergola and garden table and chairs, drying rack. Pitches 13,20,22



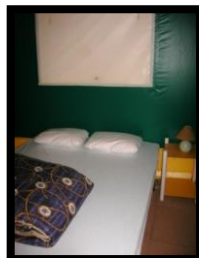
LES MOBIL-HOME IRM STANDARD

MOBILE HOME **IRM Mercure** 4 people 22m² IRM from 2002 photos below 2 bedrooms: 1 bedroom with 140 cm bed, 1 bedroom with 2 70 cm beds, bathroom with shower and basin, separate toilet, fitted kitchen with micro- microwave, fridge-freezer, crockery, bench seat, cupboards, paved terrace with pergola and garden furniture, drying rack. Blankets, mattress covers and pillows provided, household linen not provided. Slot 14

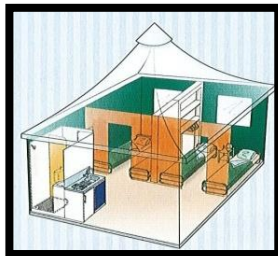


*** THE BUNGALOWS ***

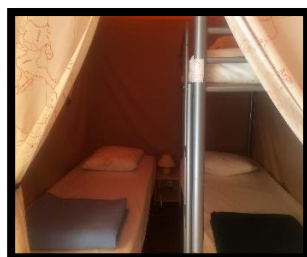
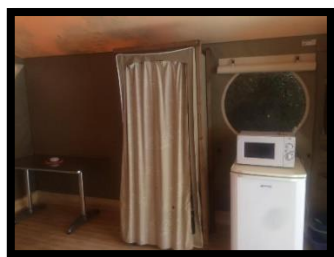
BUNGALOW TOILE 2007, 2010 et 2014 TRIGANO 4/5 PLACES



Canvas Bungalow **Pagan Trigano** 4/5 pers 25 m² paved or floor, photos above and below with 2 bedrooms: 1 bedroom with 1 bed 140, 1 bedroom with 3 beds 80 including 1 bunk, bathroom with shower, washbasin and toilet, kitchen with microwave, dishes, fridge-freezer, terrace 12 m² with garden furniture, drying rack. Blankets and pillows provided, linen not provided. Slot 53,54,55,56,59,60



Canvas bungalow **Canada Trigano** 4/5 pers 20 m² 2014 below on wooden floor and lino with 2 bedrooms: 1 bedroom with 1 bed 140, 1 bedroom with 3 beds 80 including 1 bunk, mattress, kitchen equipped with microwave, crockery, top fridge, closets, and a 12 m² wooden terrace with garden furniture, drying rack. Without water, without Sanitary: close to the bungalow. Blanket on reservation, blankets and pillows provided, linen not provided. Slot 6,7,8



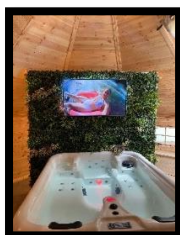
LA CABANE ATYPIQUE

CABANE Atypical 2018 comfort 2 people 3 X 2 M, with private outdoor jacuzzi on request the day before, photos below, reversible air conditioning, heating, flat screen TV, 1 140 bed with mattress pad, blanket and pillows, household linen and towels provided. Shower, toilet, folding table with 2 stools, Senséo. Outdoor kitchen, cupboard with a crockery kit, griddle and 1 gas burner, fridge freezer, terrace with table with barrel-shaped stool and garden furniture with 2 armchairs, drying rack, hammock. Location 42



LE KOTA FINLANDAIS

Atypical Finnish KOTA 2022, comfort, luxury, for 2 people 33 m² with private indoor jacuzzi, photos below, reversible air conditioning, heating, 2 flat screen TVs, 1 140 bed with mattress protector, blanket and pillows, linens and towels provided. Shower, toilet, kitchen with 4-burner gas hob, top fridge, crockery kit, table with 2 stools, Nespresso, cupboards, terrace with 2 armchairs and small table, drying rack. Slot 5





















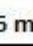




RATES OF RENTALS

RENTAL PRICES

10% Discount for 21 nights minimum

5% Discount for 14 nights minimum

10 %

		Basse Saison	Moyenne Saison	Moyenne Saison ETE	Haute Saison	
		1 janvier - 4 février 4 mars - 31 mars 30 sept - 21 oct 4 nov - 16 déc	4 février - 4 mars 31 mars - 30 juin 2 sept - 30 sept 21 oct - 4 nov 16 déc - 1 janv 24	30 juin - 8 juillet 26 août - 2 sept	8 juillet au 29 juillet	29 juillet au 26 août
Tarif par semaine						
Canada (sans sanitaires)	5	/	364 €	567 €	693 €	749 €
Pagan	5	/	385 €	595 €	798 €	840 €
Standard	4	/	434 €	665 €	798 €	840 €
Confort IRM  	4	385 €	462 €	749 €	882 €	945 €
Confort IRM  	4	385 €	462 €	784 €	945 €	980 €
Lavande  	4	350 €	434 €	686 €	847 €	889 €
Moréa 	4	350 €	462 €	749 €	882 €	945 €
Vancouver  	5	392 €	497 €	798 €	980 €	1 022 €
Atlantis standard  	6	420 €	525 €	798 €	994 €	1 043 €
Atlantis confort  	6	455 €	539 €	847 €	1 064 €	1 113 €
Edelweiss  	6	462 €	560 €	847 €	1 078 €	1 134 €
Ottawa 2018  	6	497 €	588 €	882 €	1 092 €	1 148 €
Samoa 2010  	8	490 €	644 €	945 €	1 295 €	1 379 €
Cabane atypique 6 m ²	Location à la nuit pour 2 personnes ouvert toute l'année avec jacuzzi privé					
Kota finlandais 33 m ²						
avec clim/chauffage  	5 % de remise pour 14 nuits 10% de remise pour 21 nuits		Séjour 1 nuit/week-end disponibilités et tarifs sur www.campingdetaradeau.fr			
TV 						

Rates excluding tourist tax 0.86 € from 18 years old / night / person

- 1 single vehicle per slot

- Pet €5/night max 2, prohibited in the cabin and the kota

- Included: Gas Electricity Water

- Bring the household linen (sheets, towels, tea towels)

- Possibility to rent cotton sheet sets for your stay €14.50 small bed €19 double bed

- Towel rental for 2 people 5€ for the stay

- Wifi fiber optic throughout the campsite

- Loan of cot, high chair on reservation

- Cleaning must be done on your departure or fixed price of 50 € or 70 € depending on the size

- Rate per night or a weekend please contact me at 0622663031 or site www.campingdetaradeau.fr

2023 RENTAL AGREEMENT to be completed and returned to us for any reservation "camping de la vallée de Taradeau" 371 quartier plan Guillet 83460 Taradeau tél : 04.94.73.09.14

NAME : FIRSTNAME :

ADRESS :

POST CODE : CITY :

Mail :

PHONE NUMBER:

PERSONS IN THE RENTAL ACCOMMODATION

	NAME	FIRSTNAME	DATE OF BIRTH		NAME	FIRSTNAME	DATE OF BIRTH
1				6			
2				7			
3				8			
4				9			
5				10			

See rental rates on the enclosed pages + visitor's tax

Arrival date from 4 pm in high season:

Departure date 10 h max in high season:

Select accommodation rental :

TARIF :€

FULL BOARD ADULT IN HS: PRICE: 55.00 € X =€

FULL BOARD CHILD – 12 YEARS OLD RATE: 25.00 € X =€

HALF BOARD ADULT IN HS: PRICE: 30.00 € X =€

HALF BOARD CHILD-12 YEARS IN HS: PRICE: 15.00 € X =€

CANCELLATION INSURANCE Optional see conditions on request yes or no PRICE: 99€/ week

EITHER A TOTAL OF YOUR STAY:€

Reduction 14 nights: 5%.....€

21 nights: 10%.....€

30% DEPOSIT ON BOOKING:€

BALANCE DUE TO US 1 MONTH BEFORE YOUR ARRIVAL EXCLUDING TOURIST TAX: €

I acknowledge having read the conditions of sale pages 13 to 14 and accepts them in full

Lu et approuvé : Date : Sign :

UN BON SEJOUR CHEZ NOUS

ET QUE DU BONHEUR

A BIENTOT A TARADEAU

Rental and booking conditions

chalets, mobile homes, bungalows and camping-caravanning pitches

TERMS OF SALES

In order to benefit from the services offered by the campsite Taradeau Valley, we ask you to read carefully the general conditions below. These conditions govern the sales of stays and are valid at the time the order is placed. Booking a stay implies full adherence to our terms and conditions.

BOOKING CONDITIONS

- The reservation becomes effective only with the agreement of the campsite, after receipt of the deposit and after receipt of either the booking contract duly completed and signed, or after acceptance of the general conditions of sale when booking online or by phone.
- Bookings are binding on the Taradeau Valley campsite only if they have been accepted, which is free to do or refuse, depending on the availability, and in general, of all circumstances likely to harm the execution of the booking made and offers family-oriented holidays, in the traditional sense, the accommodations are specially designed for this purpose and reserves the right to refuse any reservation that would be contrary to this principle, or that would seek to divert it.
- The booking of a campsite or a rental is made strictly personal. Under no circumstances can you sublet or transfer your reservation without the prior consent of the campsite.
- Minors must be accompanied by their parents or legal guardians.

The campsite : The basic package includes the pitch for the tent, caravan or motorhome, a car, for 1 to 2 people, access to the sanitary facilities, one of which is heated in winter, and to the campsite infrastructure, ASCI rate except July and August. You can arrive any day for arrival or departure in low season, arrival times in July and August 2 p.m. and departure 12 p.m. and 20 € administration fee. Possibility of arriving earlier (inquire at the campsite) to take advantage of the facilities (swimming pool, restaurant, outdoor games, etc.) and the rental of the plot

- Rental accommodations are equipped. The basic package is from 2 to 9 places, the campsite Taradeau Valley reserves the right to refuse access to the campsite groups or families with a number of participants greater than the capacity of the rented accommodation. The rentals are made the week from Saturday to Saturday in July and August from 16 pm for arrival and 10 am for departure, possibility of arrival earlier (ask the campsite) to enjoy the facilities (swimming pool, Jacuzzis, restaurant, outdoor games ...) and rental.

The rest of the year you can arrive and leave every day of the week, and book for the night.

An option household proposed you to 50 € for rental up to 25 m² and 70 € +25 m² on booking or on arrival, otherwise the rental must be returned in the state of cleanliness identical to that found on arrival. The refrigerator must be defrosted before departure.

Your linens (sheets, towels, tea towels) are not provided. No accommodation for people with reduced mobility.

1. Arrival

- Rental accommodation: On the day of your arrival at the campsite from 4 pm in high season, to the delivery of the keys of your rental, a deposit of € 250 (rental) and € 70 (cleaning) will be required. You will be asked for your credit card to make a pre-authorization to guarantee the payment of your purchases in the campsite option. Certificate of insurance of the civil liability of the family

2. During your stay

It is the customer's responsibility to take out insurance and bring the insurance certificate for their civil liability: the campsite declines all liability in the event of theft, fire, bad weather... and in the event of a relevant incident of the civil liability of the family will be requested upon arrival.

All customers must comply with the provisions of the rules of procedure, respect all the facilities and the tranquility of the customers and for your safety any person not respecting can be expelled without reimbursement of their stay. Each tenant in title is responsible for the disturbances and nuisances caused by the people who stay with him or visit him. Visitors admitted after reception's agreement and must pay €5 for entry for the day and may have access to the aquatic complex and sanitary facilities, playground... and must not sleep in the campsite and must leave their vehicle at the campsite. outside the campsite.

Image rights: you expressly authorize the campsite, without compensation, to use all the photographic media of you or your children which may be taken during your stay for the advertising purposes of the campsite. Please let us know when you arrive if you do not want to be filmed or photographed for the campsite.

The aquatic complex supervised by a lifeguard in July and August, with heated swimming pool from April to the end of October 25 m x 10 m, 80 cm up to 2.50 m deep, fun aqua paddling pool with inflatable water game for children, 2 jacuzzis, minors may have to be accompanied by an adult for their supervision when the swimming pool is open without supervision, armbands compulsory for children who cannot swim, swimming shorts and bikinis prohibited in July and August in accordance with the legislation, forbidden to consume drinks and food, to smoke, to

circulate in shoes, and to bring animals into the enclosure of the swimming pool. Forbidden to people with proven illnesses or bodily injuries.

Bar restaurant: open from April to the end of September, takeaway, breakfast by reservation

Barbecue (wood and charcoal) forbidden to use. Only standard gas or electric barbecues or plancha are authorized with a plate on it and not a grill.

3. Departure

- Rental accommodation: On the day of departure indicated on your contract, the rental accommodation must be vacated before 10 a.m. unless your rental is not rented on the day of your departure (see reception). The accommodation must be returned in a perfect state of cleanliness, and the inventory can be checked, any broken or damaged object will be at your expense, as well as the restoration of the premises if necessary.

The deposit will be returned to you at the end of your stay or sent by post minus the compensation retained, on supporting invoices, for any damage noted by the exit inventory. The withholding of the deposit does not exclude additional compensation in the event that the costs exceed the amount of the deposit.

In the event that the accommodation has not been cleaned before your departure, a cleaning fee of €50 or €70 including tax will be requested depending on the size of the rental.

The refrigerator must be defrosted before your departure.

PAYMENT TERMS

- For reservations made more than 30 days before the start of the stay, a deposit of 30% of the price of the amount of the stay must be paid when booking at the Taradeau Valley campsite and the full amount for a 1-night stay. The balance must be paid no later than 30 days before the start date of the stay at the campsite.

- For bookings made less than 30 days before the start date of the stay, full payment must be made at the time of booking. Tourist tax to be paid on arrival.

- We will send you an invoice confirming your reservation as soon as we have received your 1st deposit payments accepted: check payable to Taradeau campsite, bank card, cash, holiday vouchers maximum limit accepted 80% of the amount of your stay, transfer, monthly.

CANCELLATION AND CHANGES

1. Modification of your reservation

- Changes to your reservation can be made free of charge, subject to availability.

- In the absence of a message from you indicating a postponement of your arrival date, the accommodation may be available for sale again 24 hours after the arrival date mentioned on the contract, and you will consequently lose the benefit of your reservation and you will have to pay the entire stay

2. Services not used

Any stay interrupted or shortened (late arrival, early departure) by you cannot give rise to a refund and the stay must be paid in full.

3. Cancellation due to camping

In the event of cancellation by the Taradeau Valley campsite, except in cases of force majeure, the stay will be fully refunded. However, this cancellation cannot give rise to the payment of damages.

4. Cancellation by the customer

Any cancellation of a reservation must be made in writing (LAR) to the Taradeau valley campsite. Reimbursement of sums paid will be made after deduction of the amounts specified below.

If the cancellation occurs:

- Before 30 days before the start date of the stay, 80 € will be kept for stays of one night to 5 nights, and 30% for stays from 6 nights for rentals, for pitches the deposit at the reservation will be lost.

- From 30 days before the start date of the stay: 100% of the amount of the stay will be kept by the campsite and must be paid in full and gives rise to no refund unless you find a family replacing you.

In order to avoid any dispute, subscription to the cancellation guarantee is strongly recommended (see conditions)

RESPONSIBILITY of the campsite

The customer expressly acknowledges that Taradeau Valley Campsite cannot be held responsible for the communication by its partners or any third party of false information that may be mentioned in the Taradeau Campsite brochure or website, concerning the reception sites, and in particular the presentation photos, the qualifiers, the activities, the leisure, the services and the dates of operation.

All the photos and texts used in the brochure or on the Taradeau campsite websites are non-contractual. They are indicative only.

It may happen that certain activities and facilities offered by the Taradeau campsite indicated in the description in the brochure are cancelled, in particular for climatic reasons or in the event of force majeure as defined by the French courts.

CANCELLATION GUARANTEE (preferable)

Cancellation costs may be covered by cancellation guarantees, ask for cancellation conditions, The price of insurance is 8.5% of the price of your reservation for a pitch and €99 per rental per week, non-refundable in the event of cancellation of the stay to be paid upon booking In all cases with or without insurance without valid proof of the conditions, You will have to pay in full for your stay at the campsite in the event of cancellation or interruption of the stay 30 days before the start date of the stay.